

MIS Faucet Sensor (Jalapeno) + 3.6 V Bi-Stable Solenoid Valve

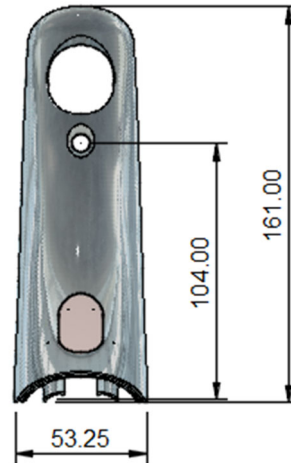
Description:

The Jalapeno faucet controller integrates an electronic sensor unit with 3.6 V DC nominal voltage. It uses an infrared (IR) sensor to detect and enable non-contact activation. When the detection area is entered – nominally 100 mm, the bi-stable valve opens to allow water flow. When the detection area is exited, the bi-stable valve closes to stop the water flow. An LED flashes briefly to provide visual feedback. The compact design of the controller allows for easy integration within faucet assemblies, minimizing the required installation space. Efficient power consumption in active and standby states results in long-lasting operation - typically 3-5 years - depending on usage patterns.

Key Features:

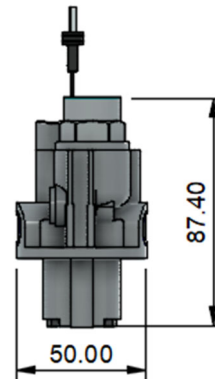
Controller

- Nominal voltage: 3.6V DC.
- Integrated control unit.
- IR sensor.
- Non-contact activation.
- Compact design for easy integration into faucets.
- Low power consumption provides long battery life up to 5 years.
- MIS User App - customizable settings and preferences via iOS and Android
- Easy installation.
- Low battery indicator (rapid flash)
- Vacation mode and 24hr Flush features
- Ingress Protection Rating: IP52



Bi-Stable Solenoid Valve Assembly

- Internal contaminant protection.
- Low power consumption at 3.6V.
- Pre-tested functional valve assembly.
- Hygiene benefit by 100% final testing with air.
- Long term performance capability.
- Low noise water hammer
- Terminated with Molded 2-pin Waterproof Connector (Male)



Product Contents:

- Electronic Faucet Controller PCB with IR Sensor
- PCB Housing (ABS) with faucet-side potting material
- 3.6V High-capacity battery (non-rechargeable), housing, cover plate and screws
- Cable Harness – direct fast connection from PCB to battery and solenoid valve
- Chrome-plated Shroud (ABS) and Santoprene Gasket
- Sensor Window (HDPE, Cranberry), Gasket and screws for Shroud assembly
- 3.6V extended lifetime (1,000,000 cycles) Solenoid Valve

Technical Parameters:

MIS Faucet Sensor (Jalapeno) + 3.6 V Bi-Stable Solenoid Valve

Parameter	Minimum	Typical	Maximum	Units
Controller				
Working Voltage (*)	3.1		3.7	V
Range Detection	20	100	150	mm
Flow Time		6	15	seconds
Response Time	0.5	1.0	2.0	seconds
Solenoid Valve				
Type		DC Bi-stable		
Working Voltage		3.6		V
Coil Resistance (@20°C)		15		Ω
Pulse Width		20		ms
Water Pressure - operational	0.05		0.8	MPa
Humidity	35		90	% RH
Working Temperature	1		60	°C
Install Direction		Vertical		
Cable Length		220 (**)		mm
Flow Rate (***)		4.45		l/min
Solenoid Adapter				
Valve Thread Size		M29 x 1.5		
Battery - Lithium				
Voltage (newly supplied)		3.6		V
Capacity (newly supplied)		3000		mAh
Lifetime (****)	3		5	years

(*) Controller will automatically shutoff solenoid valve when voltage < 3.1V

(**) Solenoid Cable + Cable Harness

(***) Including Solenoid Adapter. Cold water.

(****) Typical usage. 8,000 discharges per month

Operational Modes:

- Fixed ON. Discharge water for 6 seconds (programmable) for each actuation
- Presence ON. Discharge water while user presence determined (maximum 15 seconds)
- Detection Sensitivity. High/low
- 24Hour Flush. Optional – run faucet for 30sec each 24-hour period
- Vacation Mode. Programmable - solenoid disabled for up to 14 days
- OFF. Programmable – solenoid disabled until re-enabled.